

RENAULT ESL

S.O.S Car Simulator instruction manual

ESL/ELV REPLACEMENT PROGRAM

Page	Content	MIN. VERSION	PHOTO	PINOUT	VIDEO
Page 2	• Program introduction				
Page 3	• Renault ESL 1	001			
Page 4	• Renault ESL 2	001			
Page 5	• Renault ESL 3	001			





● Program introduction



Example cars

ESL 1

Captur
Clio III
Clio IV
Espace IV (phase III)
Fluence
Laguna III
Megane II
Megane II (lift 2004-2006)
Megane III
Scenic II
Scenic III
Talisman

ESL 2

Espace IV
Espace IV (phase II)
Laguna II
Laguna II (lift 2004-2006)

ESL 3

Megane 4
Talisman
Kadjar
Koleos

●●● Jumpers to solder

To choose the program you have to solder specific jumpers on the back of the Emulator:

ESL 1



7 6 5 4 3 2 1

6+2

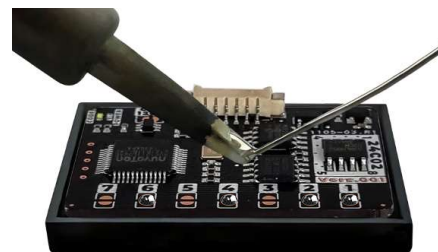
ESL 2



7 6 5 4 3 2 1

6+2+1

ESL 3



7 6 5 4 3 2 1

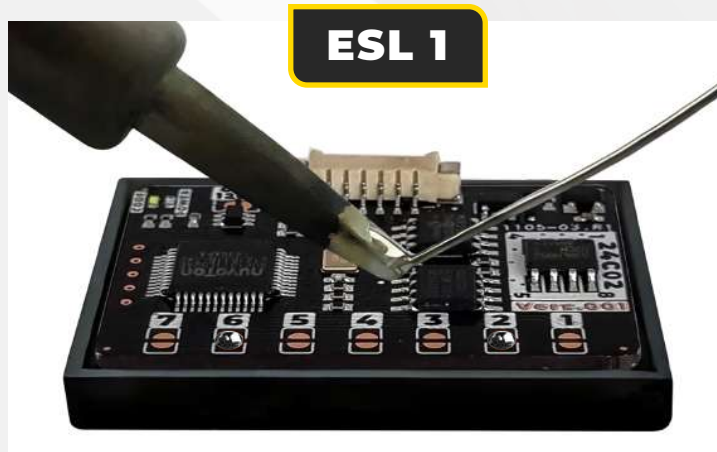
6+4+2+1

If the Emulator doesn't work, solder an additional jumper CAN 120R

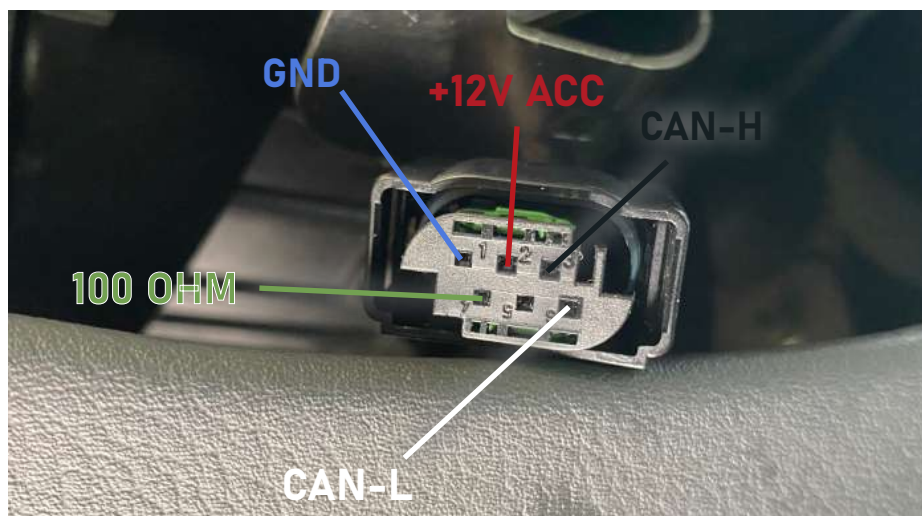
ESL 1

1 " Disconnect plug from ESL

2 " To choose the program you have to solder specific jumpers on the back of the Emulator:
2+6



3 " Connect S.O.S to ESL plug according to the picture below.



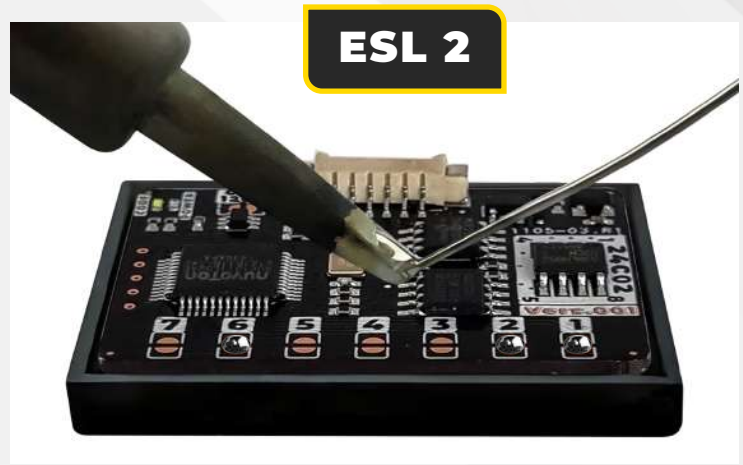
4 " The original ESL needs to be removed from the car.



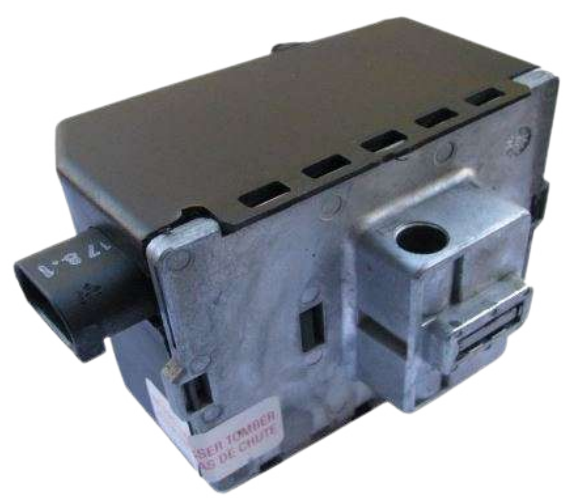
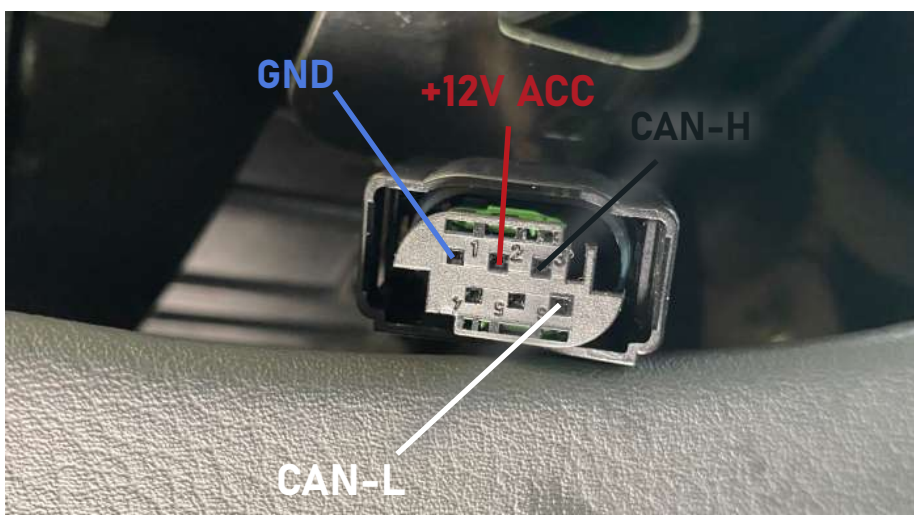
ESL 2

1 " • Disconnect plug from ESL

2 " • To choose the program you have to solder specific jumpers on the back of the Emulator:
1+2+6



3 " • Connect S.O.S to ESL plug according to the picture below.



4 " • The original ESL needs to be removed from the car.

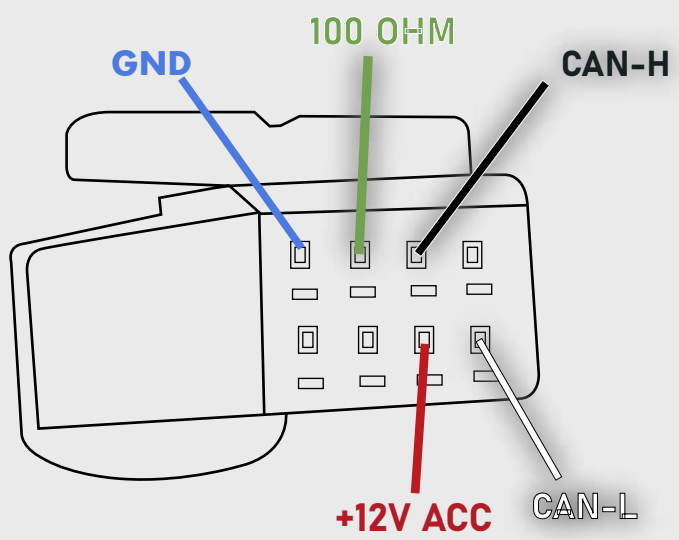
ESL 3

1 ” • Disconnect plug from ESL

2 ” • To choose the program you have to solder specific jumpers on the back of the Emulator:
1+2+4+6



3 ” • Connect S.O.S to ESL plug according to the picture below.



4 ” • The original ESL needs to be removed from the car.