



HYUNDAI / KIA - IMMO OFF

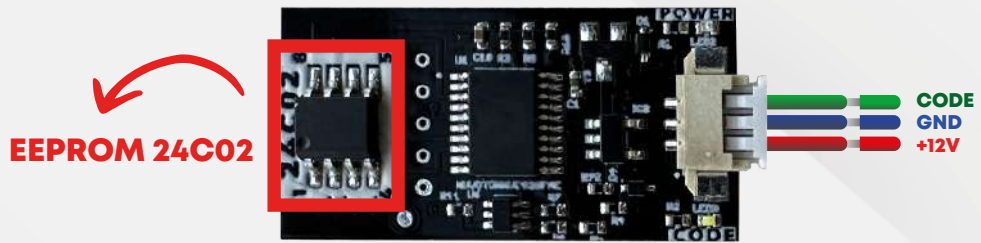
S.O.S Car Simulator instruction manual

- BOSCH EDC15C7
- BOSCH EDC 17 C08
- BOSCH EDC17C53
- BOSCH EDC17C57
- BOSCH EDC17CP14
- BOSCH EDC16C39
- BOSCH EDC17C08
- BOSCH M7.9.x
- BOSCH ME7.9.8
- BOSCH ME17.9.21.1

- KEFICO M7.9.x
- KEFICO ME7.9.8
- SIEMENS SIMK41
- SIEMENS SIMK43
- SIEMENS SIM2K-47
- CPGPSH2.14.1
- CPEGP2.10.1
- CPEGD2.20.4
- MT38

- ME17.9.11.1
- ME17.9.21.X
- MED17.9.8
- MEG17.9.12 KEFICO
- MEG17.9.13 KEFICO
- MEG17.9.21
- DELPHI DCM3.7AP
- DELPHI TRW DDCR

AND OTHER...



HYUNDAI KIA ECU EMULATOR
Note: PCF7936 transponder works on Smartra 1-2-3 model vehicles, hitag2 keyed, ecu models.

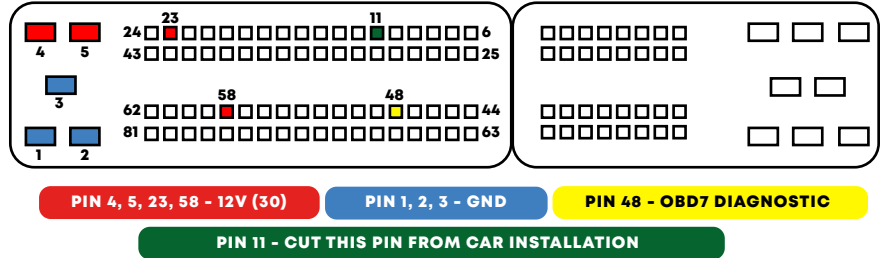
Manual Coding: Ecu. To do the programming you need to have the following information: ecu's pin code.
Pin code example: 112233. Remove the 24c02 eeprom in the emulator and write 00 on the first line and then write the pin code (example 00112233)

HYUNDAI / KIA - IMMO OFF

EDC15C7



CONNECTION



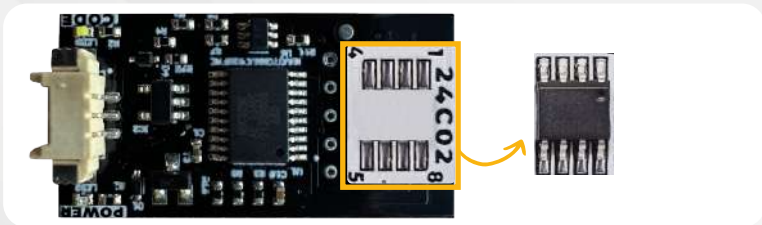
- Find the EEPROM memory on the ECU.
Unsolder the eeprom memory and read its content.

- Read the EEPROM memory and find (pin code) as shown in the example on the right.

ATTENTION: The picture shows example values. These values are different in every ECU.

OFFSET	00	01	02	03	04	05	06	07	08	09	0A	0B	0C	0D	0E	0F	
00000000	03	03	FF	00	16	17	33	39	32	2E	30	32	FF	FF	2D	16	...392 02
00000010	17	33	39	32	2E	30	32	FF	FF	FF	FF	FF	FF	FF	FF	FF	...392 02yyyyy
00000020	FF	FF	FF	FF	FF	FF	FF	FF	FF	FF	FF	FF	FF	FF	FF	FF	yyyyyyyyyyyyy
00000030	FF	FF	FF	FF	FF	20	03	12	02	FF	AA	FF	FF	FF	03	07	yyyyy ...yxy
00000040	19	20	20	00	00	00	06	5F	59	1A	AF	4F	00	B3	52	43	yyyyy ...Y C
00000050	3A	78	51	00	B3	29	09	80	80	00	00	0F	29	00	00	6B	...x0 3 (I I
00000060	00	49	00	B3	08	00	69	00	68	00	C3	FF	FF	FF	FF	FF	...I 3 i h 2y
00000070	FF	FF	FF	FF	FF	FF	FF	FF	FF	FF	FF	FF	FF	FF	FF	FF	yyyyyyyyyyyyy
00000080	FF	FF	FF	FF	FF	FF	FF	FF	FF	FF	FF	FF	FF	FF	FF	FF	yyyyyyyyyyyyy
00000090	FF	FF	FF	FF	FF	FF	FF	FF	FF	FF	FF	FF	FF	FF	FF	FF	yyyyyyyyyyyyy
000000A0	FF	FF	FF	FF	FF	FF	FF	FF	FF	FF	FF	FF	FF	FF	FF	FF	yyyyyyyyyyyyy
000000B0	FF	FF	FF	FF	FF	FF	FF	FF	FF	FF	FF	FF	FF	FF	FF	FF	yyyyyyyyyyyyy
000000C0	FF	FF	FF	FF	FF	FF	FF	FF	FF	FF	FF	FF	FF	FF	FF	FF	yyyyyyyyyyyyy
000000D0	FF	FF	FF	FF	FF	FF	FF	FF	FF	07	20	49	79	13	1B	2C	yyyyyyyyyy I
000000E0	2F	17	32	49	79	13	1B	2C	2F	17	32	49	79	13	1B	FF	...21y ... 2I
000000F0	FF	FF	FF	FF	FF	FF	FF	FF	FF	FF	FF	FF	FF	FF	FF	FF	yyyyyyyyyyyyy
00000100	FF	FF	FF	FF	FF	FF	FF	FF	FF	FF	FF	FF	FF	FF	FF	00	yyyyyyyyyyyyy
00000110	00	BA	FF	10	27	89	FF	00	00	B2	FF	10	27	81	FF	00	...y ... y
00000120	00	8A	FF	82	0A	0C	FF	00	7F	00	4D	10	00	00	80	00	...y ... I M
00000130	00	00	00	00	00	00	00	00	00	00	00	00	00	00	00	00	...
00000140	00	00	00	00	00	00	00	00	00	00	00	00	00	00	00	00	...
00000150	00	00	FF	00	00	00	00	00	00	00	00	00	00	00	00	00	...y ... y
00000160	00	00	00	00	FF	00	FF	FF	00	00	00	00	00	00	00	00	...
00000170	00	00	00	00	00	00	00	00	00	00	00	00	00	00	00	00	...
00000180	00	00	00	00	00	00	00	00	00	00	00	00	00	00	00	00	...
00000190	00	00	00	00	00	00	00	00	00	00	00	00	00	00	00	00	...
000001A0	03	00	FD	00	00	00	00	00	00	00	00	00	00	00	00	00	...
000001B0	00	00	00	80	00	D7	22	CE	AC	EA	FC	CE	AC	EA	FC	CE	...x"Teul
000001C0	AC	EA	FC	CD	ED	BF	15	CD	ED	BF	15	CD	ED	BF	15	00	...eulid Iid I
000001D0	00	00	00	00	00	00	00	00	00	00	00	00	00	00	00	00	...
000001E0	00	00	00	00	00	00	00	53	74	88	FF	FF	FF	FF	FF	FF	...St Iyy
000001F0	53	74	88	FF	FF	FF	FF	FF	53	74	88	FF	FF	FF	FF	FF	St IyyyyySt
00000200	FF	00	16	17	33	39	32	2E	30	32	FF	FF	2D	16	17	33	y ...392 02y

- Remove 24C02 memory from S.O.S Emulator



The emulator automatically recognizes the brand and the type of the engine ECU. It does not require the picking of any jumpers, which is what differentiates it amongst other emulators!

4 Write the values from Step 2 into the 24C02 memory unsoldered from S.O.S Emulator:

Addresses: **Text section** (see picture)

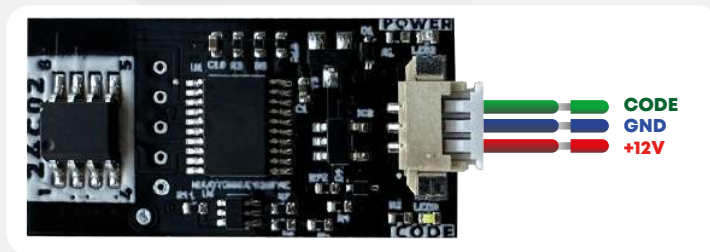
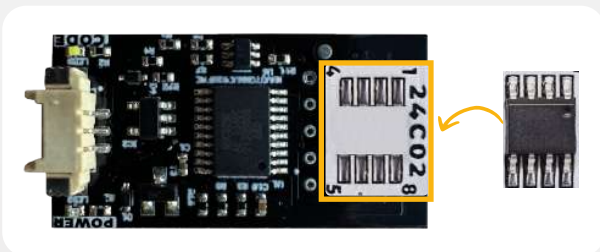
Values: **Values from Step 2.**

Solder the memory back into S.O.S Emulator.

	00	01	02	03	04	05	06	07	08	09	0A	0B	0C	0D	0E	0F
00000000	00	53	74	88	FF	FF	FF	FF	FF	FF	FF	FF	FF	FF	FF	FF
00000010	FF	FF	FF	FF	FF	FF	FF	FF	FF	FF	FF	FF	FF	FF	FF	FF
00000020	FF	FF	FF	FF	FF	FF	FF	FF	FF	FF	FF	FF	FF	FF	FF	FF
00000030	FF	FF	FF	FF	FF	FF	FF	FF	FF	FF	FF	FF	FF	FF	FF	FF
00000040	FF	FF	FF	FF	FF	FF	FF	FF	FF	FF	FF	FF	FF	FF	FF	FF
00000050	FF	FF	FF	FF	FF	FF	FF	FF	FF	FF	FF	FF	FF	FF	FF	FF
00000060	FF	FF	FF	FF	FF	FF	FF	FF	FF	FF	FF	FF	FF	FF	FF	FF
00000070	FF	FF	FF	FF	FF	FF	FF	FF	FF	FF	FF	FF	FF	FF	FF	FF
00000080	FF	FF	FF	FF	FF	FF	FF	FF	FF	FF	FF	FF	FF	FF	FF	FF
00000090	FF	FF	FF	FF	FF	FF	FF	FF	FF	FF	FF	FF	FF	FF	FF	FF

ATTENTION: When writing the pin code of the eeprom memory, do not forget to add 00 to the first line.

5 Solder back the 24C02 memory



6 Connect S.o.S Emulator to ECU according to the diagram.

